

PARTS CATALOG

Inner 2 Way Tray-E1



Oct 12 2005

PREFACE

This Parts Catalog contains listings of parts used

Diagrams are provided with the listings to aid the service technician in identifying clearly, the item to be ordered.

Whenever ordering parts, consult this Parts Catalog for all of the information pertaining to each item. Be sure to include, in the Parts Request, the full item description, the item part number, and the quantity.

COPYRIGHT (C) 1999 CANON INC.

Use of this manual should be strictly supervised to avoid disclosure of confidential information.

Contents

NUMERICAL INDEX

Inner 2 Way Tray-E11-1

Inner 2 Way Tray-E1

QA ASSEMBLY LOCATION DIAGRAM2-1
Q01 PACKING KIT2-2
Q38 2ND DELIVERY ASSEMBLY2-4

NUMERICAL INDEX

Inner 2 Way Tray-E1

PARTS NUMBER	FIGURE & KEY NO.	PARTS NUMBER	FIGURE & KEY NO.	PARTS NUMBER	FIGURE & KEY NO
4A3-1968-000	Q01 - 1				
FB5-9803-000	Q38 - 15				
FB6-1494-000	Q38 - 1				
FB6-1537-000	Q38 - 2				
FB6-1540-000	Q38 - 16				
FC6-4499-000	Q01 - 9				
FC6-4500-000	Q01 - 10				
FC6-6728-000	Q38 - 4				
FC6-6729-000	Q38 - 5				
FC6-6731-000	Q38 - 6				
FC6-6732-000	Q38 - 7				
FC6-6733-000	Q38 - 8				
FC6-6734-000	Q38 - 9				
FC6-6739-000	Q38 - 10				
FC6-6740-000	Q38 - 11				
FC6-6742-000	Q38 - 12				
FC6-6743-000	Q01 - 2				
FC6-6744-000	Q01 - 3				
FC6-6745-000	Q01 - 4				
FC6-6746-000	Q01 - 5				
FC6-6748-000	Q38 - 13				
FG6-8271-000	Q38 - 14				
FL2-3737-000	Q38 - 3				
FL2-3739-000	Q38 - 17				
FL2-3740-000	Q01 - 6				
FM2-4434-000	Q01 - 11				
FM2-4485-000	Q38 -				
FM2-4525-000	Q38 - 18				
FM2-4526-000	Q38 - 19				
FM2-4527-000	Q38 - 20				
FU5-8690-000	Q01 - 8				
FU6-0928-000	Q38 - 21				
FU6-0929-000	Q38 - 22				
FU6-2376-000	Q38 - 23				
FU6-2377-000	Q38 - 24				
FU6-2379-000	Q38 - 25				
NPN	Q01 -				
VS1-7177-002	Q38 - 26				
WG8-5696-000	Q01 - 7				
WG8-5696-000	Q38 - 27				
XA9-1116-030	Q38 - 28				
XB4-5401-007	Q01 - 501				
XB4-5401-007	Q38 - 501				
XB6-7300-609	Q01 - 502				

Inner 2 Way Tray-E1

Inner 2Way Tray-E1

F28-0125-000 KSB

Contents

QA	ASSEMBLY LOCATION DIAGRAM	2-1
Q01	PACKING KIT	2-2
Q38	2ND DELIVERY ASSEMBLY	2-4

FIGURE QA ASSEMBLY LOCATION DIAGRAM

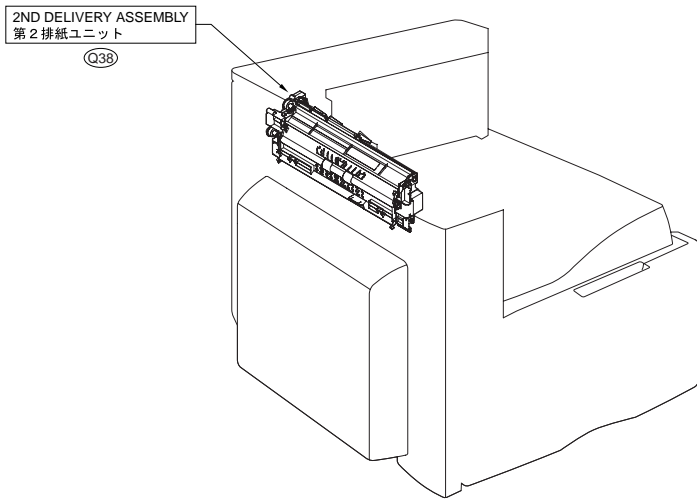


FIGURE Q01 PACKING KIT

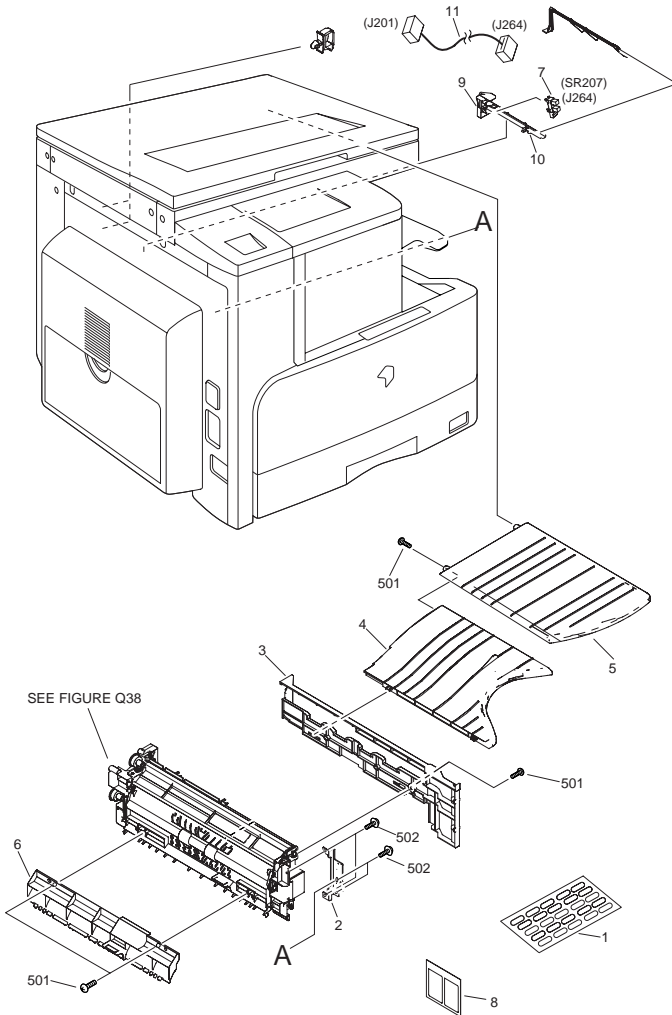


FIGURE & KEY NO.	PARTS NUMBER	R A N K	Q'TY	DESCRIPTION	SERIAL NUMBER/ REMARKS	S V C
Fig.Q01	NPN		RF	PACKING KIT		
1	4A3-1968-000		1	LABEL, TRAY INDICATION		
2	FC6-6743-000		1	PLATE, RETAINER		
3	FC6-6744-000		1	COVER, DELIVERY		
4	FC6-6745-000		1	TRAY, DELIVERY, 1		
5	FC6-6746-000		1	TRAY, DELIVERY, 2		
6	FL2-3740-000		1	GUIDE, SUPPORT, 1		
7	WG8-5696-000		1	PHOTO INTERRUPTER, TLP1243	SR207 J264	
8	FU5-8690-000		1	LABEL, JAM CLEAR		
9	FC6-4499-000		1	LEVER, SENSOR		
10	FC6-4500-000		1	HOLDER, SENSOR		
11	FM2-4434-000		1	CABLE, SENSOR	J201,264	
501	XB4-5401-007		4	SCREW, M4X10		
502	XB6-7300-609		4	SCREW, M4X10		

FIGURE Q38 2ND DELIVERY ASSEMBLY

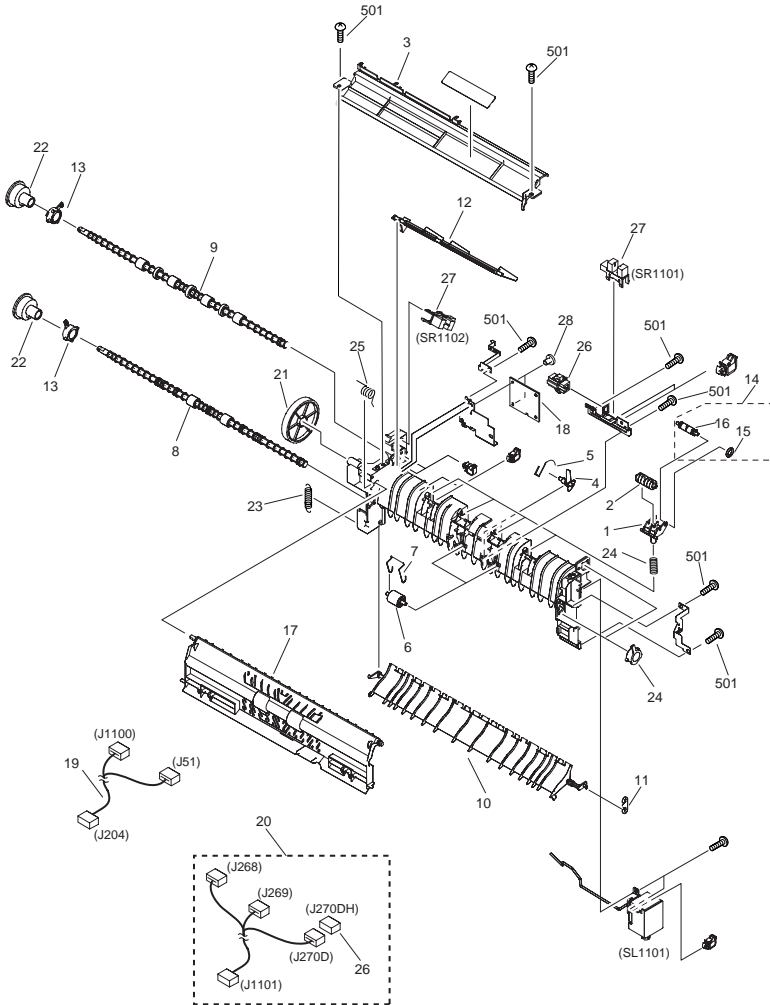


FIGURE & KEY NO.	PARTS NUMBER	R A N K	Q'TY	DESCRIPTION	SERIAL NUMBER/ REMARKS	S V C
Fig.Q38	FM2-4485-000		1	2ND DELIVERY ASSEMBLY		
1	FB6-1494-000		4	HOLDER, DELIVERY ROLLER		
2	FB6-1537-000		4	ROLLER		
3	FL2-3737-000		1	GUIDE, DELIVERY, UPPER		
4	FC6-6728-000		1	FLAG, DELIVERY SENSOR		
5	FC6-6729-000		1	SPRING, TORSION		
6	FC6-6731-000		2	COLLAR, DELIVERY		
7	FC6-6732-000		2	SPRING, TORSION		
8	FC6-6733-000		1	ROLLER, FEEDER		
9	FC6-6734-000		1	ROLLER, DELIVERY		
10	FC6-6739-000		1	DEFLECTOR		
11	FC6-6740-000		1	PLATE, LINK		
12	FC6-6742-000		1	LEVER, SENSOR		
13	FC6-6748-000		4	BUSHING		
14	FG6-8271-000		4	ROLLER, DELIVERY		
15	FB5-9803-000		1	RING		
16	FB6-1540-000		1	ROLLER		
17	FL2-3739-000		1	GUIDE, DELIVERY		
18	FM2-4525-000		1	DELIVERY DRIVER PCB ASS'Y		
19	FM2-4526-000		1	CABLE, DELIVERY UNIT	J51,204,1101	
20	FM2-4527-000		1	CABLE, DERIVER SENSOR	J268,269,270D,1101	
21	FU6-0928-000		1	GEAR, 58T		
22	FU6-0929-000		2	GEAR, 17T		
23	FU6-2376-000		1	SPRING, TENSION		
24	FU6-2377-000		4	SPRING, COMPRESSION		
25	FU6-2379-000		1	SPRING, TORSION		
26	VS1-7177-002		1	CONNECTOR, SNAP TIGHT, BK	J270DH	
27	WG8-5696-000		2	PHOTO INTERRUPTER, TLP1243	SR1101,1102	
28	XA9-1116-030		2	SCREW, M3X5		
501	XB4-5401-007		8	SCREW, M4X10		

Prepared by
OIP HFE Promotion Center
CANON INC.

Canon